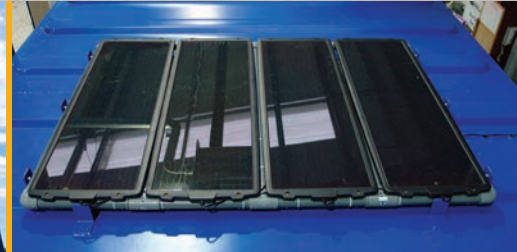




## Fully Equipped

Comes with

- Solar Panels
- Hoglift 2 System



# Static Fusion Range

from **Groundhog**

Anti-vandal, static  
site accommodation unit

Mindful of the environment, lightweight, compact & well equipped



# Sustainable design delivering cost effective, environmentally friendly and robust Static Welfare Units.

The Fusion range has a stylish and distinctive anti-vandal exterior with four curved corners that create an individual appearance.

The unit has low level lifting along with the facility for Groundhog's Hoglift 2 lifting system (optional).



Toilet facility with warm and cold running water



## Value Proposition

Potential yearly savings for the Fusion range (based on units running 8 hour day and 5 day week)

- ✓ Weighs 3,800 Kg, resulting in reduced haulage costs
- ✓ Minimum fuel savings of up to £2,000
- ✓ CO<sub>2</sub> emissions saving of over 10,000Kg
- ✓ Generator service cost saving of £1,750
- ✓ Potential breakdown costs saving of £1,200
- ✓ Low noise pollution

## Fusion+ range, B rated

Energy Performance Asset Rated

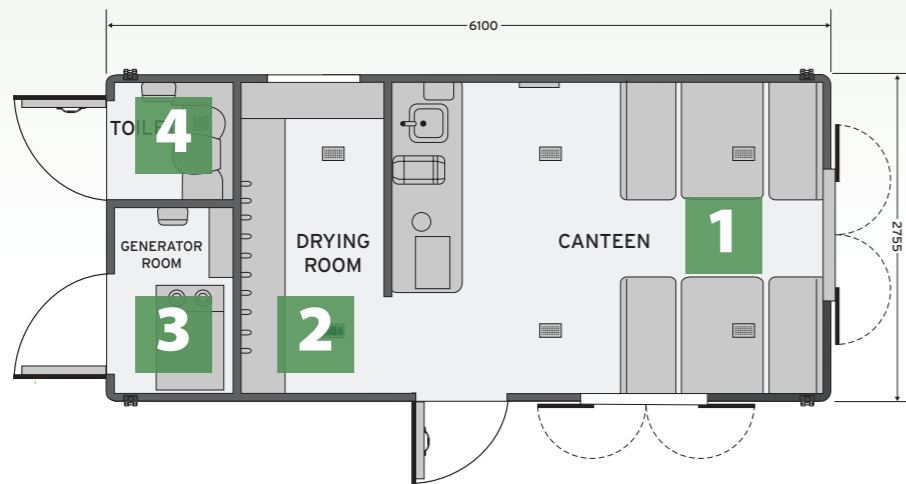
The Fusion range has been Energy Performance Asset Rated which indicates the energy efficiency of the building fabric, heating, cooling and lighting systems ventilation, making it an exceptionally eco friendly welfare unit.



## SW6100 Standard

The standard SW6100 is lightweight and compact, which meets HSE requirements and provides all your on-site needs in one compact cost effective package. The units are suitable for accommodating eight people, which provides pleasant and safe working

environments, ideal for rental companies and contractors. Once lifted into position, they provide a vandal resistant facility and can come with a number of additional money saving features.



## SWO7600 Fusion / Fusion+ (with office)

The SWO7600 offers all the cost effective and environmental features & benefits of the SW6100 but with the added feature of a spacious office giving greater flexibility onsite.

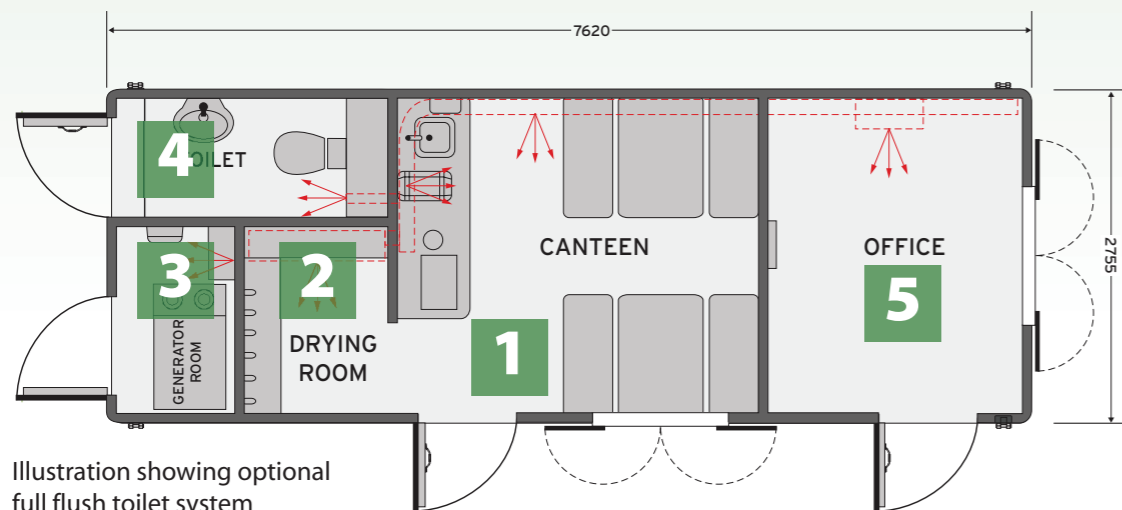


Illustration showing optional full flush toilet system

### 1. Canteen/Seating Area

- Pleasant and light rest area
- Table and bench seating for up to 8 persons
- Air blown heating system
- Stainless steel sink with instant warm water
- Microwave/Kettle
- Fresh drinking water container (20 Ltr)
- Fresh & waste water containers (20 Ltr cap each)
- 12 Volt L.E.D. Lighting PIR
- Generator control panel with hour run meter
- Paper towel dispenser
- Liquid soap dispenser
- Disposable cup dispenser
- Storage Area under counter
- Frost stat control

### 2. Drying Room

- 12 Volt L.E.D. Lighting
- Air blown heating system
- Coat hooks

### 3. Generator Room

- 6kVA Super Silent Diesel Generator with exhaust outlet and ventilation
- 12 Volt battery
- 200 Litre Diesel tank with filler neck and level gauge (optional Fuel Active system)
- 12 Volt L.E.D. Lighting
- High Capacity Battery
- 12 Volt 30amp battery charger
- Battery guard with fuse panel

### 4. Toilet Area

- Plastic Recirculating Toilet c/w ventilation pipe
- Forearm wash basin with warm water
- Toilet roll holder
- 12 Volt L.E.D. light
- Ventilation panel
- Paper towel & soap dispenser
- Flush Ceramic 12 Volt Toilet System (optional)

### 5. Office Area (SWO7600)

- Sliding window with steel shutters, which when closed are secured internally
- White Board
- Notice Board
- Office table and chair (optional)
- Double glazing (optional)
- Air blown heating system
- 12 Volt L.E.D. Light c/w P.I.R. Sensor

### Units are manufactured in two sizes

The SW6100 (6100mm x 2755mm) or the larger SWO7600 (7600mm x 2755mm) with the added benefit of an office facility. **Both units have the option of a flush toilet.**

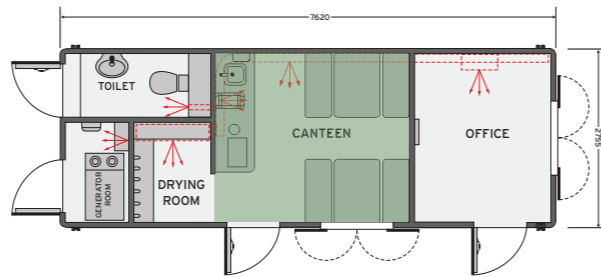


## Canteen & seating area

The canteen area has well equipped amenities such as, work surface with stainless steel sink, under work surface storage, handwash facility with soap and paper towel dispensers, fresh drinking water and appliances which include a microwave and kettle.

The rest area provides comfortable bench seating for up to eight people.

- 12 Volt L.E.D. Light c/w P.I.R. Sensor
- Air blown heating system



Rest area that provides comfortable bench seating for up to eight people



Surprisingly light and spacious canteen area (Fusion+)



Typical control panel for generator, heating system and battery level indicator



LED lights



Thermostat

## Generator & toilet area

### Generator

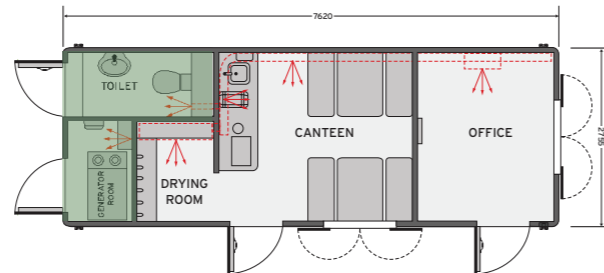
The generator room is fitted with a 6kVA super silent diesel generator, which significantly reduces noise levels, the generator has a 200 litre diesel tank complete with filler neck and level gauge.

- 12 Volt L.E.D. lighting PIR
- Ventilation panel

### Toilet

The Standard and Fusion range comes equipped with warm water taps and are fitted with a plastic recirculating toilet with ventilation pipe and wash basin.

- Flush ceramic 12 Volt toilet system (optional)



Easily accessible generator



**Fusion**  
Forearm wash basin with hot water tap and recirculating toilet



**Fusion+**  
Forearm wash basin with hot water percussion tap and recirculating toilet



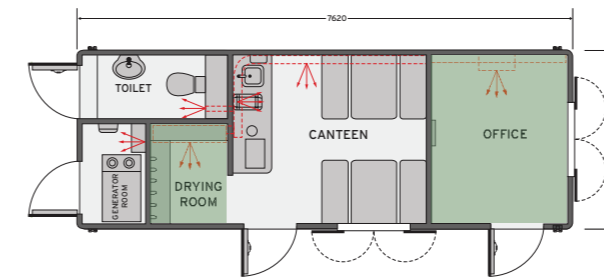
**Optional**  
Ceramic wash basin with hot water percussion tap and full flush toilet

## Office & drying area

### Office area

Light and spacious, the office area includes our air blown heating system and 12 Volt LED lighting.

- Sliding window with steel shutters, which when closed are secured internally
- White board
- Notice board



Office area (SWO7600 range only)

### Drying area

The drying area is ideal for drying wet work clothing, and incorporates the air blown heating system with frost stat control, the room also offers coat hooks and 12 volt led lighting.



Drying area



## Hoglift 2

The unique Hoglift 2 system enables units to be lifted onto vehicles without the operator leaving ground level, contributing to Health and Safety.

The Hoglift 2 system has a reinforced steel cable which is permanently fixed at the top of the unit

while the opposite end has rings that are fastened to flat webbings for lifting.

Both systems include pre-drilled plates to enable the units to be double stacked and bolted together and are both rated to 8.8 tonnes.



### Features

6100/7600  
Fusion / Fusion+

#### Canteen

- Table and bench seating for up to 8 persons
- Air blown heating system
- Microwave/Kettle
- Fresh drinking water container (20 Ltr)
- Fresh & waste water containers (20 Ltr cap each)
- Warm water tap set over large wrist to elbow sink
- 12 Volt L.E.D. Lighting PIR
- Double 13amp socket outlet
- Consumer Board c/w RCD & MCB's
- Generator control panel with hour run meter
- Paper towel dispenser
- Liquid soap dispenser
- Disposable cup dispenser
- Carbon monoxide monitor
- Storage Area under counter
- Low battery warning light and Volt Meter

- 
- 
- 
- 
- 
- 
- 
- 
- 
- 
- 
- 
- 
- 
- 

#### Generator / Drying Room

- 12 Volt L.E.D. Lighting PIR
- Air blown heating system
- Coat hooks
- 6 kVA Diesel Generator with exhaust venting through roof area
- 200 litre fuel tank complete with fuel level gauge

- 
- 
- 
- 
- 

#### Toilet Area

- Standard Recirculating Toilet c/w ventilation pipe
- Full arm wash basin (Hot Wash)
- Toilet roll holder
- 12 Volt L.E.D. lighting PIR
- Ventilation panel

- 
- 
- 
- 
- 

#### Optional Extras

- Full flush 12 Volt toilet complete with fresh water tank (60 Ltr) & effluent tank (100 Ltr)
- Starter/Safety Kit
- Painted in clients corporate colour scheme
- Externally mounted pneumatic light mast
- Rain harvesting system (flush toilet models)
- Fuel Active - Fuel Delivery System
- Hoglift 2 system
- PV Solar panel

- 
- 
- 
- 
- 
- 
- 
-



For more information on the Fusion range or to discuss your requirements please contact

**Head Office** (01554) 778 666  
**Cardiff Depot** (029) 20 452 255  
**Email** [sales@parker-hire.co.uk](mailto:sales@parker-hire.co.uk)

[www.parker-hire.co.uk](http://www.parker-hire.co.uk)



Parker Plant Hire Ltd  
Halfway, Llanelli, Carmarthenshire SA15 1HQ

Version 1.0 05/13  
Copyright ©2013 Groundhog UK Limited. All rights reserved.

No part of this material may be reproduced in any form by any means without the express written permission of Groundhog UK Limited.